



# The Mount Sinai Health System

## *Community Service Plan*

*2016 – 2018*

Mount Sinai Beth Israel

Mount Sinai Brooklyn

The Mount Sinai Hospital

Mount Sinai Queens

Mount Sinai St. Luke's

Mount Sinai West

New York Eye and Ear Infirmary of Mount Sinai

**Participating Health Department:**

New York City Department of Health and Mental Hygiene  
Ana Gallego, Office of the First Deputy Commissioner  
New York City Department of Health & Mental Hygiene  
42-09 28<sup>th</sup> Street, Long Island City, NY 11101

**Community Service Area:**

New York County, Queens County, Kings County

**For questions and/or comments please contact:**

The Mount Sinai Health System  
Community & Government Affairs  
One Gustave L. Levy Place, New York, NY 10029-6574  
Linda Hackett, MPA, Senior Program Director  
linda.hackett@mountsinai.org

## TABLE OF CONTENTS

1. About Us – The Mount Sinai Health System.....	3
2. Executive Summary.....	8
▪ A Collaboration with TCNY2020 and the Prevention Agenda Priorities	
▪ Methodology and Community Engagement	
▪ Significant Needs – Identified and Prioritized	
▪ 2013 - 2016 Updates	
3. Tracking Progress and Improvement Going Forward.....	13
4. Areas Served by Mount Sinai Health System & Borough Data.....	14
5. Take Care New York 2020.....	26
▪ Methodology	
▪ The Mount Sinai Health System Selected Priorities	
6. Exhibit: ZIP Codes Served by The Mount Sinai Health System.....	29

## About Us – The Mount Sinai Health System

**The Mount Sinai Health System is an integrated health care system providing exceptional medical care to our local and global communities.**

Encompassing the Icahn School of Medicine at Mount Sinai and seven hospital campuses in the State of New York, as well as a large, regional ambulatory footprint, Mount Sinai is internationally acclaimed for its excellence in research, patient care, and education across a range of specialties. The Mount Sinai Health System was created from the combination of the Mount Sinai Medical Center and Continuum Health Partners, which both agreed unanimously to combine the two entities in July 2013.

The Health System is designed to increase efficiencies and economies of scale; improve quality and outcomes; and expand access to advanced primary, specialty, and ambulatory care services throughout a wide clinical network. The Health System includes more than 7,000 primary and specialty care physicians and 12 joint-ventures ambulatory surgery centers. Mount Sinai also features a robust and continually expanding network of multispecialty services, including more than 45 ambulatory practices throughout the five boroughs of New York City, and Westchester County. With an extraordinary array of resources for the provision of compassionate, state-of-the-art care, the Mount Sinai Health System is poised to identify and respond to the health-related needs of the diverse populations we serve.

In 2014, Mount Sinai Health System announced new brand identification to build on the principal strengths and world-renowned recognition for excellence of The Mount Sinai Hospital and the Icahn School of Medicine at Mount Sinai.

The hospitals within the Mount Sinai Health System which underwent brand enhancement changes includes: Mount Sinai Brooklyn (formerly Beth Israel Brooklyn), Mount Sinai Beth Israel (formerly Beth Israel Medical Center), Mount Sinai St. Luke's (formerly St. Luke's Hospital), Mount Sinai West (formerly Mount Sinai Roosevelt), and the New York Eye and Ear Infirmary of Mount Sinai (formerly New York Eye and Ear Infirmary). The name remains the same for The Mount Sinai Hospital and Mount Sinai Queens.

## **Our Mission**

### **Why we exist; why the world will be different because we are here**

The mission of the Mount Sinai Health System is to provide compassionate patient care with seamless coordination and to advance medicine through unrivaled education, research, and outreach in the many diverse communities we serve.

## **Vision**

### **Who we want to become; what we want to achieve or create**

The Mount Sinai Health System's vision is to continue to grow and challenge convention through our pioneering spirit, scientific advancements, forward-thinking leadership, and collaborative approach to providing exceptional patient care in the many unique communities we serve.

## **Brand Promise**

### **The net benefit we deliver to those we serve**

Mount Sinai is the choice for groundbreaking and compassionate health care. Our unrivaled education, translational research, and collaborative clinical leadership ensure that we deliver the best patient care—from prevention to treatment of the most serious and complex human diseases.

## **Brand Positioning**

### **Who we serve, what we provide, and how we're different**

At Mount Sinai, we reimagine what is possible and redefine the practice of modern medicine, both in our local community and across the world, to produce the only result that really matters: radically better outcomes for our patients.

## Facts and Figures

The Mount Sinai Health System combines the Icahn School of Medicine at Mount Sinai and seven hospital campuses to provide the highest quality health care throughout the State of New York.

Our integrated resources and expertise offer patients comprehensive care from birth through geriatrics, including complex cases.

This newly established system significantly expands our geographic footprint and increases our number of beds to 3,494. Listed below are the following statistics associated with this combined entity:

- Seven hospital campuses: Mount Sinai Beth Israel, Mount Sinai Brooklyn, The Mount Sinai Hospital, Mount Sinai Queens, Mount Sinai St. Luke's, Mount Sinai West, and New York Eye and Ear Infirmary of Mount Sinai
- 12 free-standing ambulatory surgical centers - minority-owned
- More than 300 ambulatory care practices - nonsurgical services
- More than 30 affiliations with community health centers
- More than 7,000 physicians, including general practitioners and specialists
- More than 2,000 residents and clinical fellows
- 38,000+ employees
- 29 multidisciplinary research, educational, and clinical institutes
- 152,576 inpatient admissions
- More than 3,400,000 outpatient visits to offices and clinics - non-Emergency Department
- 425,451 Emergency Department visits
- 17,000 babies delivered a year
- 3,494 beds
- 138 operating rooms

## Community Advisory Board

The purpose of the Mount Sinai Health System Community Advisory Board is to provide support to the Health System, to further its goals on community and governmental issues, and communicate the Health System strategy to the community. The board is responsible for helping the system to better reflect the opinions and needs of the communities it serves while developing best practices on community programs implemented by the system.

Membership on the board consist of consumer and provider members of the respective hospital Community Advisory Boards. Under the Mount Sinai Health System, there are four respective Community Advisory Boards:

- The Mount Sinai Hospital and Icahn School of Medicine at Mount Sinai Community Advisory Board
- Mount Sinai Queens Community Advisory Board
- Mount Sinai St. Luke's and Mount Sinai West Community Advisory Board
- Mount Sinai Beth Israel Community Advisory Council

## Icahn School of Medicine at Mount Sinai



The Icahn School of Medicine at Mount Sinai is an international leader in medical and scientific training, biomedical research, and patient care. It is the medical school for the Mount Sinai Health System, which includes seven hospital campuses, and has more than 5,000 faculty and nearly 2,000 students, residents and fellows. Our unwavering pursuit of intellectual exchange, breakthrough research, and multidisciplinary teamwork propels us ever forward in biomedical discoveries and advances. We pursue ideas that often challenge conventional wisdom to revolutionize the practice of medicine and produce dramatically better outcomes for patients. We make big bold bets by investing in radical free thinkers and technology at the cutting edge.

The Icahn School of Medicine at Mount Sinai is an integral component of the Mount Sinai Health System, a top-tier, fully-integrated network of physicians and professional staff who provide education, research, and medicine across the full range of specialties. We translate discoveries and inventions into advanced patient care, serving one of the most diverse cultural and socioeconomic populations in the world, as we blaze new trails in our global community.

## Executive Summary

The Mount Sinai Health System’s 2016-2018 Community Health Needs Assessment (CHNA) involved collaboration efforts with the following:

- New York State Department of Health “NYSDOH” – Prevention Agenda 2013-2018, the State’ framework for improving the health of New Yorkers, a vision for New York to become the nation’s healthiest state by addressing health priorities, the Prevention Agenda provides a blueprint for action to address five health indicators aligned with the health care challenges identified under Delivery System Reform Incentive Payment (DSRIP) Program.
- New York City Department of Health and Mental Hygiene’s “DOHMH” – Take Care New York 2020 (TCNY2020). TCNY2020 - is the City's blueprint for giving everyone the chance to live a healthier life. Its goal is twofold — to improve every community's health, and to make greater strides in groups with the worst health outcomes, so that our city becomes a more equitable place for everyone.
- DSRIP - Mount Sinai PPS Community Needs Assessment “CNA”, December 2014 - DSRIP’s purpose is to fundamentally restructure the health care delivery system by reinvesting in the Medicaid program, with the primary goal of reducing avoidable hospital use by 25% over 5 years.





## **Methodology Assessment and Public Community Engagement**

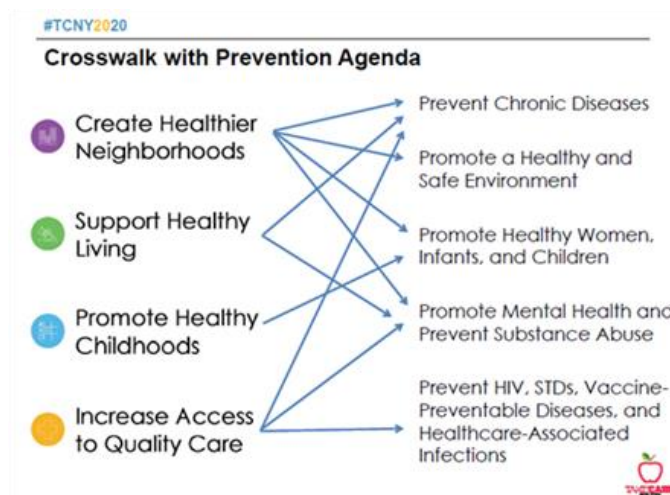
Mount Sinai Health System’s 2016-2018 Community Service Plan “CSP” was comprised of both quantitative and qualitative research components, from the newly launched TCNY2020 initiative and Mount Sinai PPS CNA December 2014, which represents one of the nation’s most extensive efforts to reform Medicaid and improve health care delivery.

### **DSRIP-Mount Sinai PPS, December 2014 CNA**

Mount Sinai PPS qualitative data derived from Mount Sinai PPS survey results which involved on-the-ground insight from providers and stakeholders on key community health needs and barrier to accessing health care services. Respondents answered 62 questions divided into the following components: organizational information, access to health care services, care coordination, health care barriers, and patient centered medical homes. Approximately, 200 parent organizations and stand-alone organizations in Mount Sinai PPS completed and submitted surveys capturing data on provider readiness and gaps in care.

### **TCNY2020**

TCNY2020 goals required collective action of diverse communities and stakeholders. DOHMH held 28 Community Consultations across the five boroughs, in addition to releasing an online survey during the fall and winter of October 2015 and March 2016. Through this process, feedback was compiled from over 1,000 New Yorkers to identify the Top 5 Indicators by borough, and by Community District. At these public venues, community members shared and prioritized issues they felt were most urgent in their neighborhoods.



## Community Health Needs Identified and Prioritized

TCNY2020 recognizes that health outcomes are influenced by factors outside of an individual’s control and some of the social determinants of health may include neighborhood safety, access to healthy food and housing quality.

To identify the top health indicators from a given borough, DOHMH collectively analyzed all ballots (in-person and online) which participants had noted a community district of residence located within that borough. Participants ranked the indicators according to the importance of their community. Listed below is a list of the Top 5 health indicators that are contributing to achieving TCNY2020.

- Obesity
- Air Quality
- High Blood Pressure
- Smoking
- Unmet Mental Health Needs

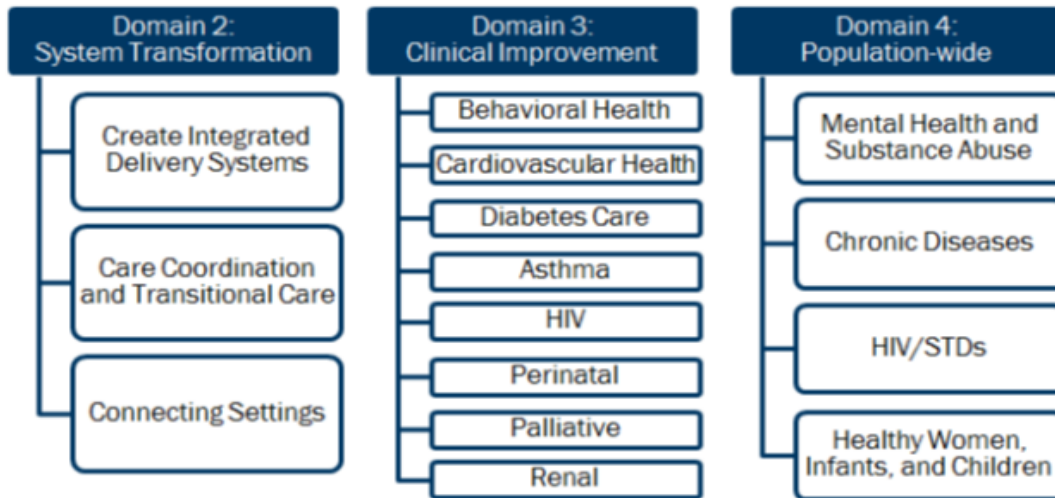
### THEMES FROM DOHMH COMMUNITY DISCUSSION



In 2013 and 2016, a large number of hospitals identified diabetes, hypertension/high blood pressure, heart disease, obesity, mental health issues and asthma as significant community health need. HIV/AIDS and other infectious diseases were considered significant community health needs at five hospitals in 2013, but none considered it among their most significant needs in 2016. A decrease in importance is consistent with the continued progress in reducing HIV/AIDS diagnoses and deaths in New York City. By the end of the year, TCNY2020 Planning Partners and community members will

write a local action plan outlining methods for securing resources and steps for the implementation process.

### Mount Sinai PPS Projects



# 2013 Priority Updates

The Mount Sinai Health System SIGNIFICANT HEALTH NEEDS FOR 2013 - 2016 COMMUNITY HEALTH NEEDS ASSESSMENT			
NEED	Hospital Action(s)	Hospital Program(s)	Impact & Outcome
Access to Preventive and Primary Care and Health Insurance	Free health services and information on low cost health centers and clinics. Free skin cancer screenings. Free women's health diagnostics. Informational Health Fairs. Roundtables, and Lectures.	(1) Resource Entitlement and Advocacy Program (REAP) at Mount Sinai Hospital (2) and the Patient Financial Assistance Program at Mount Sinai Queens (3) Martha Stewart Center for Living at Mount Sinai (4) Mount Sinai Adolescent Health Center.	930 community residents attended health fairs. Over 405 breast cancer screening and diagnostics performed, over 6,000 patients served through REAP.
Access to Mental Health Care and Poor Mental Health Status	Provide inpatient and outpatient mental health services, supportive counseling, and crisis intervention.	The Mount Sinai Adolescent Health Center (MSAHC), the Mount Sinai Sexual Assault and Violence Intervention (SAVI) Program.	Founded in 1984, the Mount Sinai SAVI Program addresses issues of Sexual and Domestic Violence on individual and societal levels throughout NYC through its advocacy, counseling and education services. Services are offered in over 10 different languages.
Chronic Diseases and Contributing Lifestyle	Provide cardiovascular screenings, health education, and intervention programs to reduce heart disease among women and minorities. Offer programs and services related to detection and prevention of diabetes and stroke. Provide free community health education programs and nutrition lectures related to children, adolescents, adults, and seniors.	The Mount Sinai Heart Women's Cardiac Assessment and Risk Evaluation (CARE) program.	Over 350 women received heart health screenings via "Go Red For Women".
Cultural, Ethnic, and Linguistic Barriers to Care	Provide community health and wellness services in several languages, including Spanish and Greek, to ensure that the entire community has access to health education and information.	Witness Project of Harlem and the Esperanza Vida—The Latina Witness Project of Harlem.	SAVI is an example of a program offered in a variety of languages to serve the local communities. Several Current Wellness and Service Programs are offered in at least 2 languages.
Environmental Determinants of Health	Provide subsidized health eating options.	Mount Sinai Greenmarket.	The Mount Sinai Greenmarket is open each year to the public providing fresh food from June to November at Madison Avenue and 99th Street.
Infant Health Risk Factors and Outcomes	Refer individuals to community health centers, federally qualified health centers, and clinics that provide free and low cost maternal and child health services to infants, toddlers, and adolescents (The Mount Sinai Hospital).	Mount Sinai Adolescent Health Center (MSAHC), the Sinai Peers Encouraging Empowerment through Knowledge (SPEEK) program.	Mount Sinai Adolescent Health Center. Our unique, New York City-based program delivers comprehensive, integrated medical and mental health services and prevention education to young people aged 10 to 22. It is the largest center of its kind in the United States providing confidential, quality health care and support services to underserved and at-risk youth, regardless of their ability to pay.
Poverty, Financial Hardship, and Basic Needs Insecurity	Offering a wide range of free health screening and education programs	The Resource Entitlement and Advocacy Program (REAP) and the Patient Financial Assistance Program.	REAP is sponsored by the Department of Social Work Services. REAP provides a centralized source of information and assistance to hospitalized patients and community residents to apply and advocate for government entitlements such as Medicaid, Child Health Insurance, Nutrition benefits, Disability Insurance and other needed community resources.
Sexually Transmitted Infections and HIV/AIDS	Provide primary outpatient and inpatient treatment including mental health services, substance abuse counseling, social work services to people with HIV, and free HIV testing for adults and children with infectious diseases, as well as preventive services to those at risk.	Jack Martin Fund Clinic and the Mount Sinai Comprehensive Health Program-Downtown.	The Jack Martin Fund Clinic provides primary outpatient and inpatient treatment for adults and children with infectious diseases. It is a New York State Department of Health Designated AIDS Center. The Jack Martin Fund Clinic is housed within the Center for Advanced Medicine at 5-17 East 102nd Street, between Madison and Fifth Avenues.

## **Tracking Progress and Improvement Going Forward**

The Mount Sinai Health System's primary data tracking and analysis process is comprised of both quantitative and qualitative research components from the TCNY2020 Initiative, the Mount Sinai PPS - December 2014, and the NYSDOH Prevention Agenda.

Additional sources of data tracking analyzed include: New York City Community Health Profiles, SPARCS data (version 2016), NYSDOH Vital Statistics, New York State Cancer Registry, NYSDOH Surveillance System, EpiQuery data, Behavioral Health Risk Factor Surveillance System, and U.S. Census Data.

The Mount Sinai Health System's 2016-2018 Community Service Plan represents an internal collaboration across its facilities, and with external organizations in the community. Together, we identify the health needs of the community and develop strategies for addressing them. We will continue to work with community partners and take a collaborative approach to improve population health in the five boroughs of New York City. The Mount Sinai Hospital System's Community and Government Affairs Office reached out to a cross section of the Health System's associates to facilitate broad interests of the community and have expertise in public health, to help identify the health needs in their county's community. Mount Sinai Health System also partnered with community-based organizations, health care organizations in each of the counties in our service area.

## Areas Served by Mount Sinai Health System

The Mount Sinai Health System services the entirety of the five New York City boroughs, along with Westchester County. The following pages provide updated 2016 information collected by Mount Sinai on a borough, by borough, basis and focus on the demographics of the communities being served.

### Hospitals

Mount Sinai Beth Israel  
 Mount Sinai Brooklyn  
 The Mount Sinai Hospital  
 Mount Sinai Queens  
 Mount Sinai St. Luke's  
 Mount Sinai West  
 New York Eye and Ear Infirmary of Mount Sinai

### Areas Served

Manhattan  
 Queens  
 Brooklyn  
 Bronx  
 Staten Island  
 Westchester County



### 2016 Demographics Snapshot: Manhattan

#### DEMOGRAPHIC CHARACTERISTICS

	Selected Area		USA		2016	2021	% Change
	Area	USA					
2010 Total Population	1,577,411	308,745,538		Total Male Population	775,419	798,252	2.9%
2016 Total Population	1,638,772	322,431,073		Total Female Population	863,353	885,745	2.6%
2021 Total Population	1,683,997	334,341,965		Females, Child Bearing Age (15-44)	407,157	386,990	-5.0%
% Change 2016 - 2021	2.8%	3.7%					
Average Household Income	\$127,026	\$77,135					

#### POPULATION DISTRIBUTION

Age Group	Age Distribution			USA 2016	
	2016	% of Total	2021	% of Total	% of Total
0-14	214,845	13.1%	234,060	13.9%	19.0%
15-17	36,760	2.2%	39,374	2.3%	4.0%
18-24	131,997	8.1%	110,905	6.6%	9.8%
25-34	364,222	22.2%	331,666	19.7%	13.3%
35-54	456,981	27.9%	488,994	29.0%	26.0%
55-64	187,387	11.4%	197,015	11.7%	12.8%
65+	246,580	15.0%	281,983	16.7%	15.1%
<b>Total</b>	<b>1,638,772</b>	<b>100.0%</b>	<b>1,683,997</b>	<b>100.0%</b>	<b>100.0%</b>

#### HOUSEHOLD INCOME DISTRIBUTION

2016 Household Income	Income Distribution		
	HH Count	% of Total	% of Total
<\$15K	115,931	14.6%	12.3%
\$15-25K	66,708	8.4%	10.4%
\$25-50K	119,620	15.1%	23.4%
\$50-75K	95,138	12.0%	17.6%
\$75-100K	74,378	9.4%	12.0%
Over \$100K	321,910	40.6%	24.3%
<b>Total</b>	<b>793,685</b>	<b>100.0%</b>	<b>100.0%</b>

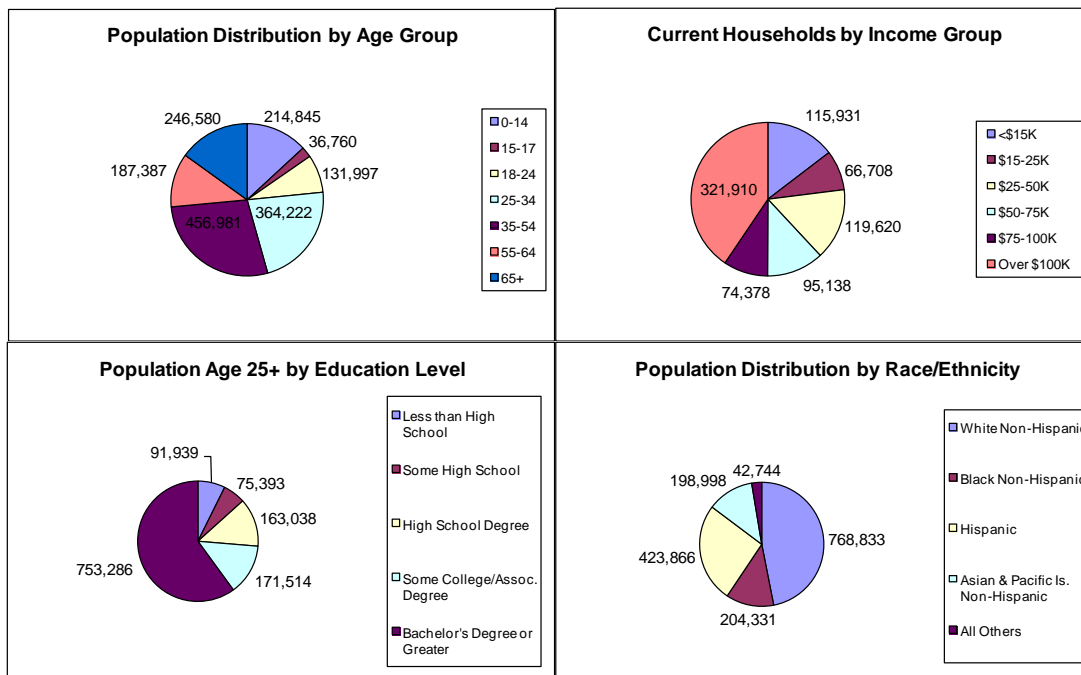
#### EDUCATION LEVEL

2016 Adult Education Level	Education Level Distribution		
	Pop Age 25+	% of Total	% of Total
Less than High School	91,939	7.3%	5.8%
Some High School	75,393	6.0%	7.8%
High School Degree	163,038	13.0%	27.9%
Some College/Assoc. Degree	171,514	13.7%	29.2%
Bachelor's Degree or Greater	753,286	60.0%	29.4%
<b>Total</b>	<b>1,255,170</b>	<b>100.0%</b>	<b>100.0%</b>

#### RACE/ETHNICITY

Race/Ethnicity	Race/Ethnicity Distribution		
	2016 Pop	% of Total	% of Total
White Non-Hispanic	768,833	46.9%	61.3%
Black Non-Hispanic	204,331	12.5%	12.3%
Hispanic	423,866	25.9%	17.8%
Asian & Pacific Is. Non-Hispanic	198,998	12.1%	5.4%
All Others	42,744	2.6%	3.1%
<b>Total</b>	<b>1,638,772</b>	<b>100.0%</b>	<b>100.0%</b>

### 2016 Demographic Snapshot: Manhattan



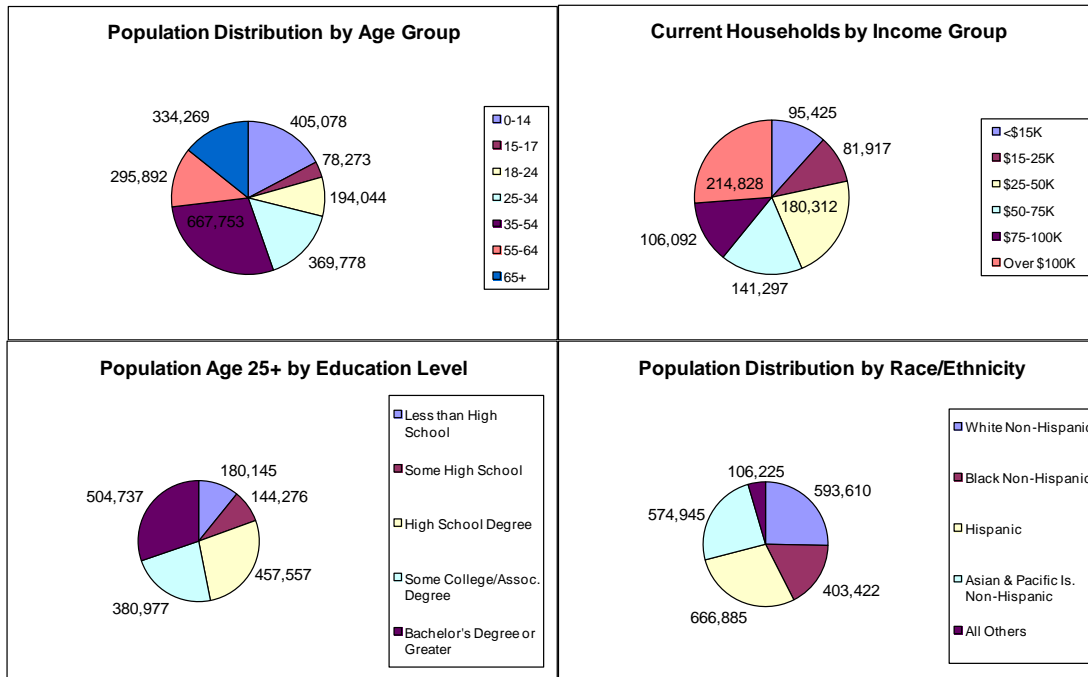
2016 Demographics Snapshot: Queens

DEMOGRAPHIC CHARACTERISTICS							
	Selected Area		USA		2016	2021	% Change
	Area	USA					
2010 Total Population	2,224,423	308,745,538		Total Male Population	1,140,346	1,186,862	4.1%
2016 Total Population	2,345,087	322,431,073		Total Female Population	1,204,741	1,248,679	3.6%
2021 Total Population	2,435,541	334,341,965		Females, Child Bearing Age (15-44)	488,727	478,682	-2.1%
% Change 2016 - 2021	3.9%	3.7%					
Average Household Income	\$77,530	\$77,135					

POPULATION DISTRIBUTION					HOUSEHOLD INCOME DISTRIBUTION				
Age Distribution					Income Distribution				
Age Group	2016	% of Total	2021	% of Total	USA 2016				
					Pop Age 25+	% of Total	% of Total		
0-14	405,078	17.3%	422,805	17.4%	19.0%	<\$15K	95,425	11.6%	12.3%
15-17	78,273	3.3%	81,581	3.3%	4.0%	\$15-25K	81,917	10.0%	10.4%
18-24	194,044	8.3%	180,881	7.4%	9.8%	\$25-50K	180,312	22.0%	23.4%
25-34	369,778	15.8%	339,660	13.9%	13.3%	\$50-75K	141,297	17.2%	17.6%
35-54	667,753	28.5%	696,325	28.6%	26.0%	\$75-100K	106,092	12.9%	12.0%
55-64	295,892	12.6%	318,292	13.1%	12.8%	Over \$100K	214,828	26.2%	24.3%
65+	334,269	14.3%	395,997	16.3%	15.1%				
<b>Total</b>	<b>2,345,087</b>	<b>100.0%</b>	<b>2,435,541</b>	<b>100.0%</b>	<b>100.0%</b>	<b>Total</b>	<b>819,871</b>	<b>100.0%</b>	<b>100.0%</b>

EDUCATION LEVEL				RACE/ETHNICITY			
Education Level Distribution				Race/Ethnicity Distribution			
2016 Adult Education Level	Pop Age 25+	% of Total	% of Total	2016 Pop	% of Total	% of Total	
							USA
Less than High School	180,145	10.8%	5.8%	White Non-Hispanic	593,610	25.3%	61.3%
Some High School	144,276	8.7%	7.8%	Black Non-Hispanic	403,422	17.2%	12.3%
High School Degree	457,557	27.4%	27.9%	Hispanic	666,885	28.4%	17.8%
Some College/Assoc. Degree	380,977	22.8%	29.2%	Asian & Pacific Is. Non-Hispanic	574,945	24.5%	5.4%
Bachelor's Degree or Greater	504,737	30.3%	29.4%	All Others	106,225	4.5%	3.1%
<b>Total</b>	<b>1,667,692</b>	<b>100.0%</b>	<b>100.0%</b>	<b>Total</b>	<b>2,345,087</b>	<b>100.0%</b>	<b>100.0%</b>

2016 Demographic Snapshot: Queens





2016 Demographics Snapshot: Brooklyn

DEMOGRAPHIC CHARACTERISTICS

	Selected Area		USA			
	Area	USA		2016	2021	% Change
2010 Total Population	2,504,089	308,745,538				
2016 Total Population	2,657,307	322,431,073				
2021 Total Population	2,766,906	334,341,965				
% Change 2016 - 2021	4.1%	3.7%				
Average Household Income	\$74,284	\$77,135				
Total Male Population				1,263,259	1,321,349	4.6%
Total Female Population				1,394,048	1,445,557	3.7%
Females, Child Bearing Age (15-44)				596,680	587,069	-1.6%

POPULATION DISTRIBUTION

Age Group	Age Distribution				USA 2016 % of Total
	2016	% of Total	2021	% of Total	
0-14	531,965	20.0%	563,354	20.4%	19.0%
15-17	96,064	3.6%	101,218	3.7%	4.0%
18-24	234,715	8.8%	220,986	8.0%	9.8%
25-34	459,935	17.3%	430,542	15.6%	13.3%
35-54	701,777	26.4%	747,159	27.0%	26.0%
55-64	294,985	11.1%	308,306	11.1%	12.8%
65+	337,866	12.7%	395,341	14.3%	15.1%
<b>Total</b>	<b>2,657,307</b>	<b>100.0%</b>	<b>2,766,906</b>	<b>100.0%</b>	<b>100.0%</b>

HOUSEHOLD INCOME DISTRIBUTION

2016 Household Income	Income Distribution		
	HH Count	% of Total	USA % of Total
<\$15K	173,448	17.7%	12.3%
\$15-25K	106,760	10.9%	10.4%
\$25-50K	212,993	21.7%	23.4%
\$50-75K	153,312	15.6%	17.6%
\$75-100K	104,036	10.6%	12.0%
Over \$100K	231,329	23.6%	24.3%
<b>Total</b>	<b>981,878</b>	<b>100.0%</b>	<b>100.0%</b>

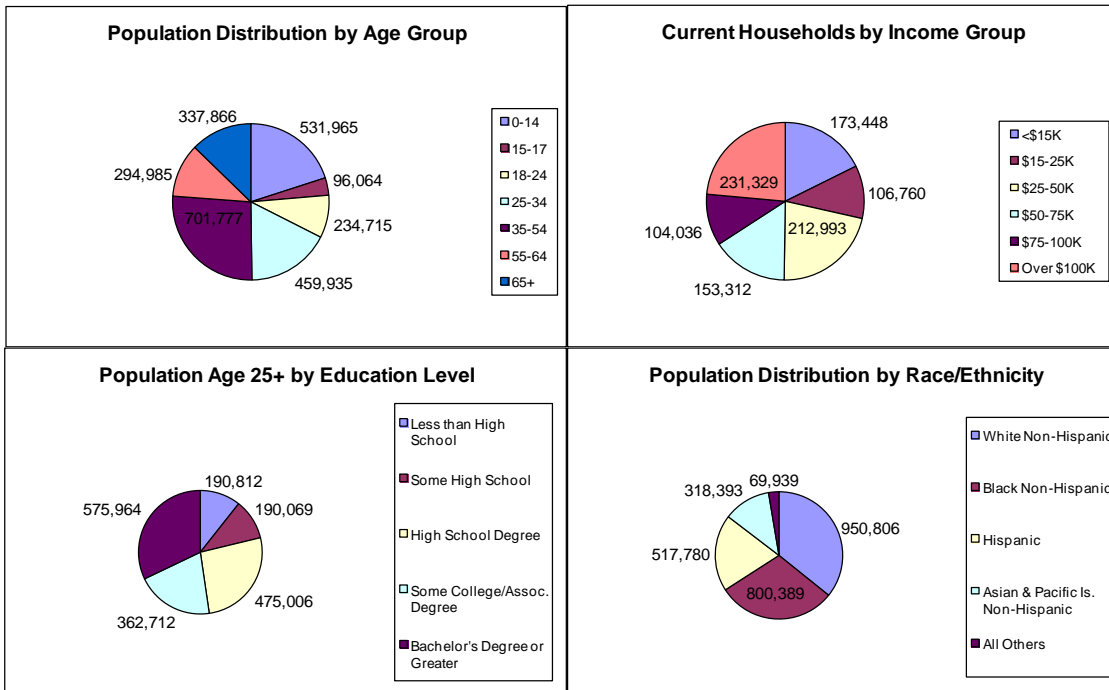
EDUCATION LEVEL

2016 Adult Education Level	Education Level Distribution		
	Pop Age 25+	% of Total	USA % of Total
Less than High School	190,812	10.6%	5.8%
Some High School	190,069	10.6%	7.8%
High School Degree	475,006	26.5%	27.9%
Some College/Assoc. Degree	362,712	20.2%	29.2%
Bachelor's Degree or Greater	575,964	32.1%	29.4%
<b>Total</b>	<b>1,794,563</b>	<b>100.0%</b>	<b>100.0%</b>

RACE/ETHNICITY

Race/Ethnicity	Race/Ethnicity Distribution		
	2016 Pop	% of Total	USA % of Total
White Non-Hispanic	950,806	35.8%	61.3%
Black Non-Hispanic	800,389	30.1%	12.3%
Hispanic	517,780	19.5%	17.8%
Asian & Pacific Is. Non-Hispanic	318,393	12.0%	5.4%
All Others	69,939	2.6%	3.1%
<b>Total</b>	<b>2,657,307</b>	<b>100.0%</b>	<b>100.0%</b>

2016 Demographic Snapshot: Brooklyn



2016 Demographics Snapshot: Bronx

DEMOGRAPHIC CHARACTERISTICS

	Selected Area		USA		2016	2021	% Change
2010 Total Population	1,393,501	308,745,538		Total Male Population	692,395	722,499	4.3%
2016 Total Population	1,465,178	322,431,073		Total Female Population	772,783	797,619	3.2%
2021 Total Population	1,520,118	334,341,965		Females, Child Bearing Age (15-44)	324,009	322,974	-0.3%
% Change 2016 - 2021	3.7%	3.7%					
Average Household Income	\$49,267	\$77,135					

POPULATION DISTRIBUTION

Age Group	Age Distribution				USA 2016 % of Total
	2016	% of Total	2021	% of Total	
0-14	313,924	21.4%	321,873	21.2%	19.0%
15-17	63,012	4.3%	63,027	4.1%	4.0%
18-24	158,623	10.8%	146,379	9.6%	9.8%
25-34	220,323	15.0%	226,088	14.9%	13.3%
35-54	379,197	25.9%	386,882	25.5%	26.0%
55-64	157,524	10.8%	173,973	11.4%	12.8%
65+	172,575	11.8%	201,896	13.3%	15.1%
<b>Total</b>	<b>1,465,178</b>	<b>100.0%</b>	<b>1,520,118</b>	<b>100.0%</b>	<b>100.0%</b>

HOUSEHOLD INCOME DISTRIBUTION

2016 Household Income	Income Distribution		
	HH Count	% of Total	USA % of Total
<\$15K	131,818	25.7%	12.3%
\$15-25K	72,439	14.1%	10.4%
\$25-50K	126,398	24.6%	23.4%
\$50-75K	76,415	14.9%	17.6%
\$75-100K	45,471	8.8%	12.0%
Over \$100K	61,300	11.9%	24.3%
<b>Total</b>	<b>513,841</b>	<b>100.0%</b>	<b>100.0%</b>

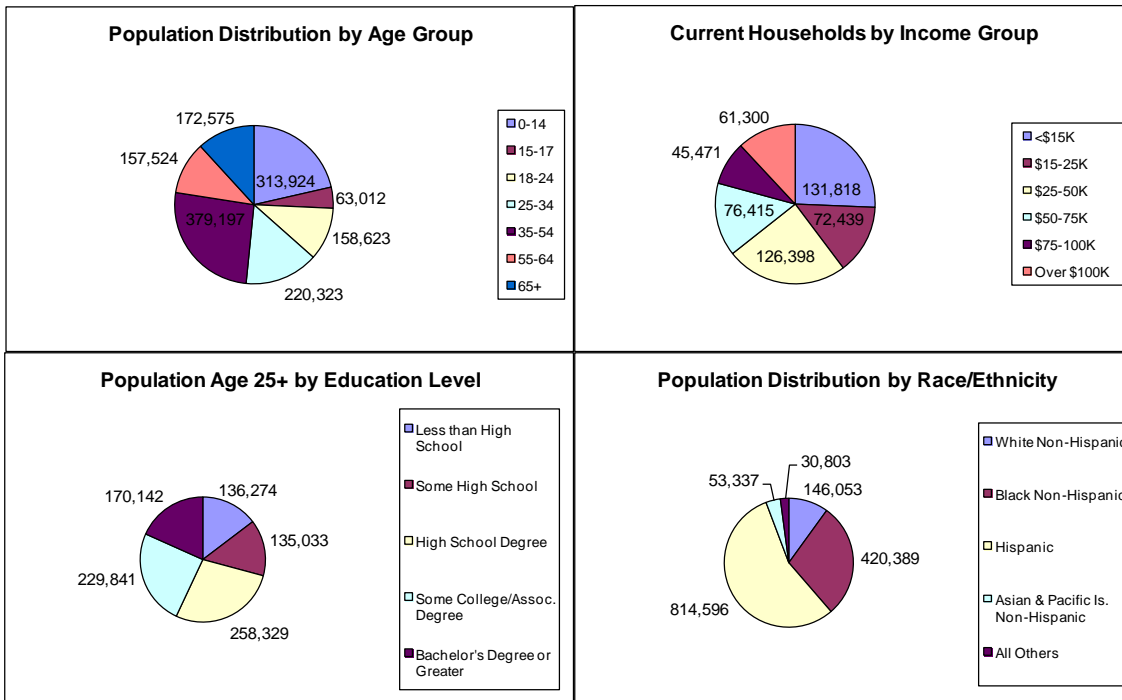
EDUCATION LEVEL

2016 Adult Education Level	Education Level Distribution		
	Pop Age 25+	% of Total	USA % of Total
Less than High School	136,274	14.7%	5.8%
Some High School	135,033	14.5%	7.8%
High School Degree	258,329	27.8%	27.9%
Some College/Assoc. Degree	229,841	24.7%	29.2%
Bachelor's Degree or Greater	170,142	18.3%	29.4%
<b>Total</b>	<b>929,619</b>	<b>100.0%</b>	<b>100.0%</b>

RACE/ETHNICITY

Race/Ethnicity	Race/Ethnicity Distribution		
	2016 Pop	% of Total	USA % of Total
White Non-Hispanic	146,053	10.0%	61.3%
Black Non-Hispanic	420,389	28.7%	12.3%
Hispanic	814,596	55.6%	17.8%
Asian & Pacific Is. Non-Hispanic	53,337	3.6%	5.4%
All Others	30,803	2.1%	3.1%
<b>Total</b>	<b>1,465,178</b>	<b>100.0%</b>	<b>100.0%</b>

2016 Demographic Snapshot: Bronx



### 2016 Demographics Snapshot: Staten Island

#### DEMOGRAPHIC CHARACTERISTICS

	Selected Area		USA		2016	2021	% Change
	Area	USA					
2010 Total Population	468,728	308,745,538		Total Male Population	229,963	233,682	1.6%
2016 Total Population	474,638	322,431,073		Total Female Population	244,675	248,069	1.4%
2021 Total Population	481,751	334,341,965		Females, Child Bearing Age (15-44)	92,199	90,692	-1.6%
% Change 2016 - 2021	1.5%	3.7%					
Average Household Income	\$92,232	\$77,135					

#### POPULATION DISTRIBUTION

Age Group	Age Distribution			USA 2016		
	2016	% of Total	2021	% of Total	% of Total	
0-14	85,941	18.1%	83,327	17.3%	19.0%	
15-17	18,693	3.9%	18,790	3.9%	4.0%	
18-24	43,254	9.1%	42,475	8.8%	9.8%	
25-34	61,548	13.0%	62,184	12.9%	13.3%	
35-54	128,767	27.1%	123,548	25.6%	26.0%	
55-64	64,311	13.5%	66,372	13.8%	12.8%	
65+	72,124	15.2%	85,055	17.7%	15.1%	
<b>Total</b>	<b>474,638</b>	<b>100.0%</b>	<b>481,751</b>	<b>100.0%</b>	<b>100.0%</b>	

#### HOUSEHOLD INCOME DISTRIBUTION

2016 Household Income	Income Distribution		
	HH Count	% of Total	% of Total
<\$15K	17,437	10.4%	12.3%
\$15-25K	13,912	8.3%	10.4%
\$25-50K	28,331	16.9%	23.4%
\$50-75K	27,937	16.6%	17.6%
\$75-100K	21,684	12.9%	12.0%
Over \$100K	58,576	34.9%	24.3%
<b>Total</b>	<b>167,877</b>	<b>100.0%</b>	<b>100.0%</b>

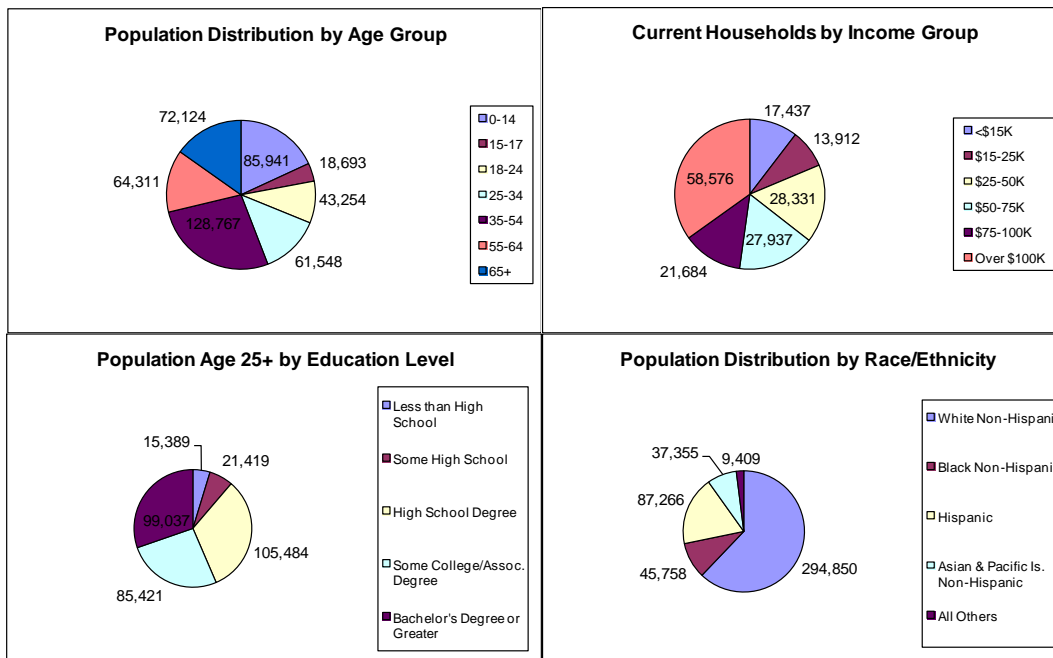
#### EDUCATION LEVEL

2016 Adult Education Level	Education Level Distribution		
	Pop Age 25+	% of Total	% of Total
Less than High School	15,389	4.7%	5.8%
Some High School	21,419	6.6%	7.8%
High School Degree	105,484	32.3%	27.9%
Some College/Assoc. Degree	85,421	26.1%	29.2%
Bachelor's Degree or Greater	99,037	30.3%	29.4%
<b>Total</b>	<b>326,750</b>	<b>100.0%</b>	<b>100.0%</b>

#### RACE/ETHNICITY

Race/Ethnicity	Race/Ethnicity Distribution		
	2016 Pop	% of Total	% of Total
White Non-Hispanic	294,850	62.1%	61.3%
Black Non-Hispanic	45,758	9.6%	12.3%
Hispanic	87,266	18.4%	17.8%
Asian & Pacific Is. Non-Hispanic	37,355	7.9%	5.4%
All Others	9,409	2.0%	3.1%
<b>Total</b>	<b>474,638</b>	<b>100.0%</b>	<b>100.0%</b>

### 2016 Demographic Snapshot: Staten Island



## 2016 Demographics Snapshot: Westchester

### DEMOGRAPHIC CHARACTERISTICS

	Selected			2016	2021	% Change
	Area	USA				
2010 Total Population	947,502	308,745,538	Total Male Population	472,882	486,060	2.8%
2016 Total Population	978,271	322,431,073	Total Female Population	505,389	518,091	2.5%
2021 Total Population	1,004,151	334,341,965	Females, Child Bearing Age (15-44)	181,444	182,815	0.8%
% Change 2016 - 2021	2.6%	3.7%				
Average Household Income	\$127,993	\$77,135				

### POPULATION DISTRIBUTION

Age Group	Age Distribution				USA 2016 % of Total
	2016	% of Total	2021	% of Total	
0-14	179,069	18.3%	172,825	17.2%	19.0%
15-17	40,689	4.2%	41,728	4.2%	4.0%
18-24	91,516	9.4%	99,792	9.9%	9.8%
25-34	109,126	11.2%	113,343	11.3%	13.3%
35-54	267,472	27.3%	250,457	24.9%	26.0%
55-64	131,219	13.4%	142,007	14.1%	12.8%
65+	159,180	16.3%	183,999	18.3%	15.1%
<b>Total</b>	<b>978,271</b>	<b>100.0%</b>	<b>1,004,151</b>	<b>100.0%</b>	<b>100.0%</b>

### HOUSEHOLD INCOME DISTRIBUTION

2016 Household Income	Income Distribution		
	HH Count	% of Total	USA
<\$15K	29,912	8.3%	12.3%
\$15-25K	26,412	7.4%	10.4%
\$25-50K	57,191	15.9%	23.4%
\$50-75K	48,261	13.4%	17.6%
\$75-100K	40,219	11.2%	12.0%
Over \$100K	157,308	43.8%	24.3%
<b>Total</b>	<b>359,303</b>	<b>100.0%</b>	<b>100.0%</b>

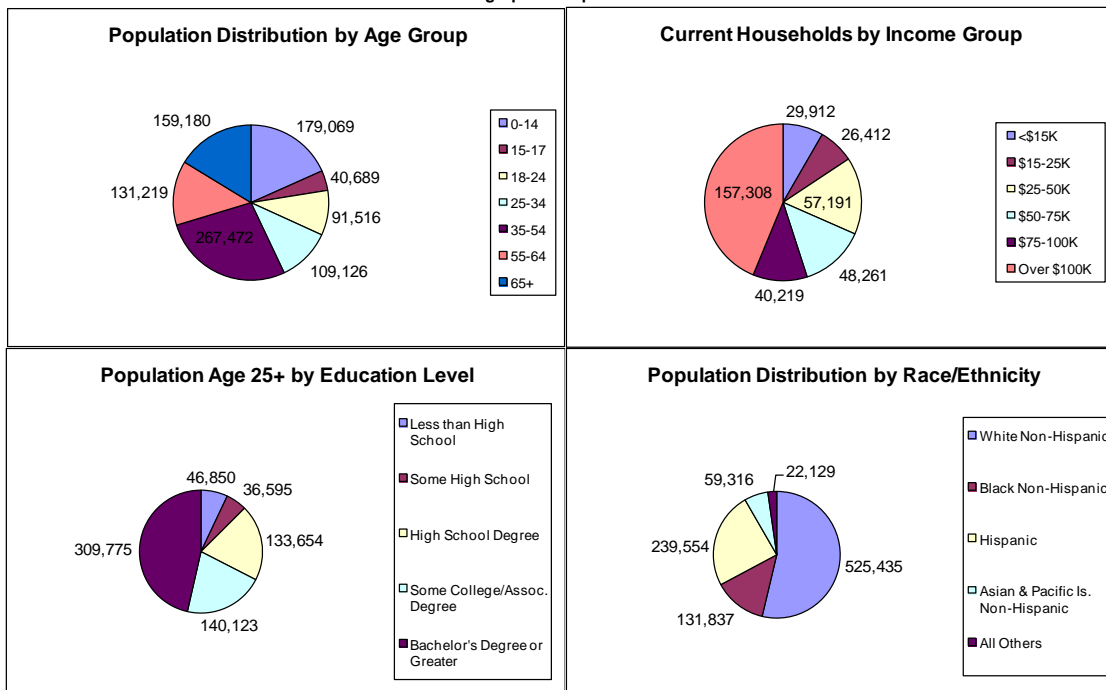
### EDUCATION LEVEL

2016 Adult Education Level	Education Level Distribution		
	Pop Age 25+	% of Total	USA
Less than High School	46,850	7.0%	5.8%
Some High School	36,595	5.5%	7.8%
High School Degree	133,654	20.0%	27.9%
Some College/Assoc. Degree	140,123	21.0%	29.2%
Bachelor's Degree or Greater	309,775	46.4%	29.4%
<b>Total</b>	<b>666,997</b>	<b>100.0%</b>	<b>100.0%</b>

### RACE/ETHNICITY

Race/Ethnicity	Race/Ethnicity Distribution		
	2016 Pop	% of Total	USA
White Non-Hispanic	525,435	53.7%	61.3%
Black Non-Hispanic	131,837	13.5%	12.3%
Hispanic	239,554	24.5%	17.8%
Asian & Pacific Is. Non-Hispanic	59,316	6.1%	5.4%
All Others	22,129	2.3%	3.1%
<b>Total</b>	<b>978,271</b>	<b>100.0%</b>	<b>100.0%</b>

### 2016 Demographic Snapshot: West Chester



### **Mount Sinai Beth Israel**

Founded in 1889 on Manhattan's Lower East Side, Mount Sinai Beth Israel is notable for its unique approach to combining medical excellence with clinical innovation. It continues its long-standing commitment to community-based ambulatory care and expanding patient access to primary and specialty care.



In May of 2016 the Mount Sinai Health System announced a plan for the sweeping transformation of Mount Sinai Beth Israel by investing over \$500 million to create the new “Mount Sinai Downtown,”

an expanded and unified network of state-of-the-art facilities stretching from the East River to the Hudson River below 34th Street.

These facilities will be conveniently located throughout the community to better serve each patient in the most appropriate setting, whether in a traditional hospital bed, an outpatient practice, a state-of-the-art surgical facility, or even in the patient’s home. Our plan is to develop Mount Sinai Downtown into one of the most innovative and accessible health care systems in the country.

### **Mount Sinai Brooklyn**

Mount Sinai Brooklyn, 212-bed acute-care community hospital located in Midwood, has gone through numerous renovations and upgrades over the past decade to expand its scope of services. The latest advances include a completely redesigned intensive care unit, a new 128 slice CT scanner, MRI services, new digital mammography equipment, and a state-of-the-art radiology suite.



The hospital's emergency department also serves as a major hub of activity and a critical community resource. The hospital enjoys an excellent reputation in such specialties as cardiac care, geriatric care, gastroenterology, general surgery, gynecology and orthopedics.

### **The Mount Sinai Hospital**

Founded in 1852, The Mount Sinai Hospital is a 1,171-bed, tertiary-care teaching facility acclaimed internationally for excellence in clinical care.

In the 2016-17 "Best Hospitals" issue of *U.S. News & World Report*, the institution was ranked in eleven specialties nationally. In the magazine's 2016-17 "Best Children's Hospitals" issue, The Kravis Children's Hospital at Mount Sinai is listed among the country's best children's hospitals in seven out of 10 pediatric specialties.



The Mount Sinai Hospital consistently earns Magnet status for nursing care, and it is the only medical center in New York State to earn Disease-Specific Care Comprehensive Stroke Center Certification from The Joint Commission. The institution also received a Health Care Innovation Award from the Centers for Medicare and Medicaid Services to open the first geriatric emergency department in New York City, and its Mount Sinai Access service was one of the largest and most sophisticated inpatient transfer services in the city.

## Mount Sinai Queens

Mount Sinai Queens is a welcoming community hospital in the Astoria section of Queens, offering high-quality outpatient, emergency, and inpatient medical services. Our medical facility has a highly-trained team of nearly 500 physicians representing close to 40 medical and surgical specialties and subspecialties.

We are evolving to meet the changing needs of the neighborhoods we serve and to extend our geographical reach throughout the borough, and that now includes our new \$175 million, 140,000 square foot Ambulatory



**The new building expansion and modernization project at Mount Sinai Queens will significantly improve health care delivery for local residents.**

Pavilion featuring the state-of-the-art Stavros Niarchos Foundation Emergency Department. Our expansion also includes new medical and surgical facilities: Mount Sinai Queens Imaging, an outpatient imaging center; Mount Sinai Doctors, a large, multispecialty physician practice; new state-of-the-art operating rooms with the latest technology; and an interventional radiology suite that will enable Mount Sinai physicians to perform image-guided, minimally invasive procedures.

Mount Sinai Queens continues to expand its Cancer programs with the opening of a new Infusion Center across the street from the hospital. As an extension of the Tisch Cancer Center at Mount Sinai, the attractive, convenient location provides state-of-the-art care with a team of clinicians on the faculty of the Icahn School of Medicine at Mount Sinai.

We have the distinction of being the only hospital in Queens designated as a primary Stroke Center by the New York State Department of Health and the Joint Commission, and the only hospital in Queens to receive the prestigious Magnet® designation for nursing excellence awarded by the American Nurses Credentialing Center. Most recently, Mount Sinai Queens received the *Get with the Guidelines Gold Achievement Award*, having reached the goal of treating patients to standards of care as outlined by the American Heart Association and the American Stroke Association.

Mount Sinai Queens is part of the Mount Sinai Health System, which allows us to combine the excellence of an academic medical center with the compassionate, caring environment you expect from a community hospital. We have received high marks for patient satisfaction, as evidenced by receiving the coveted Press Ganey Success Story Award®, which recognizes outstanding health care organizations that have measurably improved patient experience. Mount Sinai Queens is one of only 15 hospitals nationally in 2015 to have received this honor.

### **Mount Sinai St. Luke's**

With 495 beds, we serve as the principal health care provider for the West Harlem and Morningside Heights communities and operate one of Manhattan's few Level 2 trauma services. Founded in 1847, it was home to the Al-Sabah Arrhythmia Institute, a world-class, multidisciplinary center specializing in the care and treatment of heart ailments. A member of the Mount Sinai Health System, we also enjoy an outstanding reputation for services in many other medical specialties, including internal medicine,



geriatrics, trauma, bariatric surgery, vascular disease, HIV/AIDS, cardiac care, physical rehabilitation, psychiatric disorders, and substance abuse. We continue to expand its commitment to community-based ambulatory care and access to primary and specialty care.

We offer world-class clinical care and research within the comfort of a neighborhood hospital known for compassion and sensitivity. We strive to be a leader in quality and safety, and are committed to providing you with complete and accurate reporting on our quality and safety agenda and performance results.



### **Mount Sinai West**

Founded in 1871 as the Roosevelt Hospital, Mount Sinai West is a full-service, 505-bed medical center, with a long history of clinical excellence. Mount Sinai West has been home to the C.V. Starr Hand Surgery Center and one of the oldest teaching hand surgery fellowships in the country since 1952, and is renowned for multiple surgical specialties, its robust maternity service, and delivering the highest quality, patient-centered care.



We have a 24/7, state-of-the-art emergency department on 59th Street between Ninth and Tenth Avenues that sees more than 65,000 patients a year, and the hospital has been named a designated stroke center by the New York State Department of Health. We are also a teaching facility for the Icahn School of Medicine at Mount Sinai, preparing the next generation of physicians for their career in medicine.

### **New York Eye and Ear Infirmary of Mount Sinai**

New York Eye and Ear Infirmary of Mount Sinai “NYEE” is one of the world's leading facilities for the diagnosis and treatment of diseases of the eyes, ears, nose, and throat, and related structures of the head and neck. Founded in 1820, NYEE is the first and most historic specialty hospital in the nation, as well as the busiest.



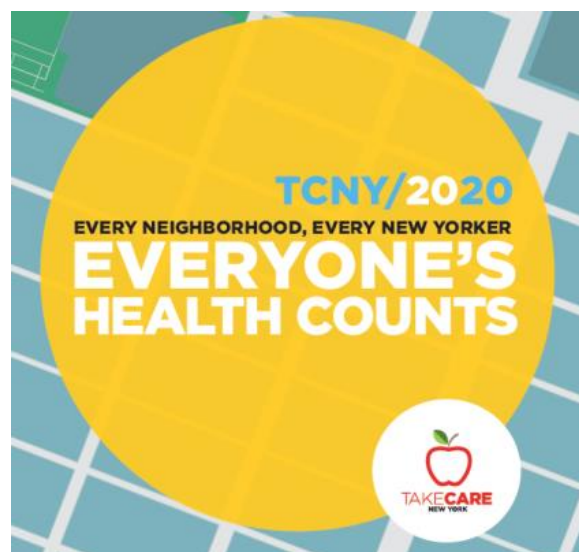
With a rich heritage and a mission of providing highest quality patient care, graduate and continuing medical education, scientific research, and community outreach, NYEE has

built upon its strengths to maintain a leadership position in the fields of Ophthalmology, Otolaryngology/ Head & Neck Surgery, and Plastic and Reconstructive Surgery.

Commitment to excellence has earned NYEE a ranking as one of *US News and World Report's "Best Hospitals in America"* for Ophthalmology and a number of its medical staff are included in nationwide "Top Doctor" directories. The hospital has been awarded Magnet status twice for excellence in nursing care.

### **Take Care New York 2020**

In addition to the community needs established in the DSRIP – Mount Sinai PPS, Mount Sinai Health System will partner and collaborate with DOHMH to support efforts in achieving TCNY2020 goals. TCNY2020 is the New York City Health Department's blueprint for helping to make communities healthier. Its goal is twofold: to improve every community's health and to make greater strides with groups that have the worst health outcomes, so that our city becomes a more equitable place for everyone. TCNY2020 looks at traditional health factors as well as social factors.



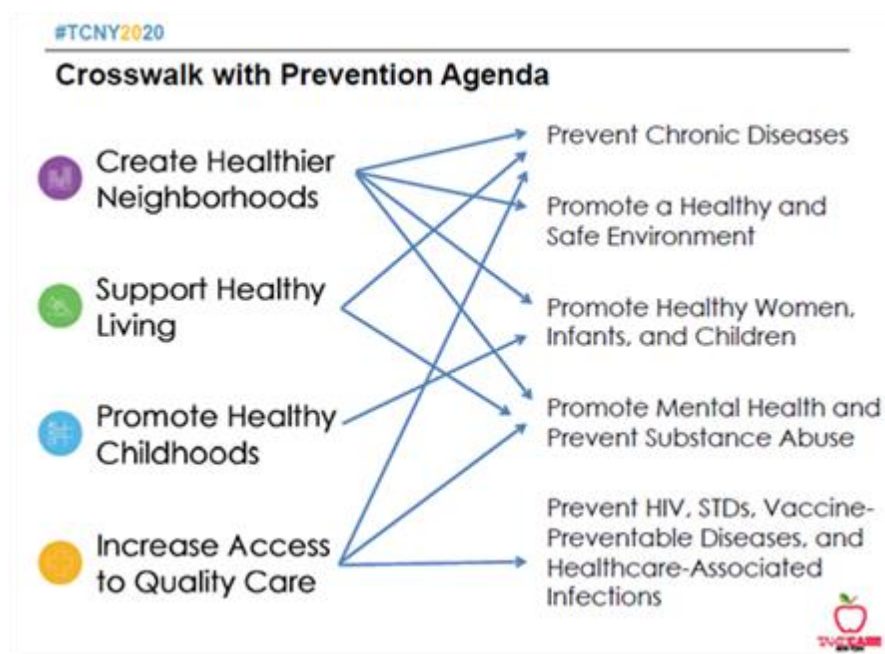
TCNY2020 goals are driven by the health needs of New York City's residents. DOHMH received input through 28 community consultations across the five boroughs, eight organizations were selected and awarded a \$50,000 grant to develop neighborhood health action plans, and to address local health priorities, such as obesity, smoking, and high school graduation among others.

The community-based organizations will develop a health action plan for a different New York City neighborhood with a high burden of poor health outcomes. The TCNY Planning Partners will help achieve the health equity goals set out in TCNY2020 by mobilizing community members and developing local action plans to effect change. Community members will assess resources and assets

in their neighborhoods that can be leveraged to support a local action plan and identify potential interventions. In the fall 2016, TCNY2020 Planning Partners reconvened with community members to select an intervention to address the health issue they would like address in their neighborhoods.

By the end of the year, TCNY2020 Planning Partners and community members will write a local action plan, outlining methods for securing resources and steps for the implementation process.

### TCNY2020 Crosswalk with Prevention Agenda Priorities 2017-2019



### Methodology

The TCNY2020 initiative identifies key areas for health improvement across the City for advancing health equity. Achieving TCNY2020 goals requires the collective action of diverse communities and stakeholders; New Yorkers were asked “What matters most to your community?”

The DOHMH held community consultations across the five boroughs and released an online survey during fall and winter of 2015 and 2016. During this process, feedback was compiled from over 1,000 New Yorkers city-wide, by borough, and by community district. DOHMH provided grants to 11 community organizations to support our outreach efforts.



To make Community Consultation sites accessible to all New Yorkers, DOHMH collaboratively selected sites based on location or proximity to neighborhoods with high rates of poor outcomes; neighborhoods accessibility by subway or other common modes of transportation; free or inexpensive venues with evening and/or weekend hours; and layout accommodations for small groups discussions and AV equipment. DOHMH staffed each site with experts in policy, communications, community engagement and intergovernmental affairs.

### **The Mount Sinai Health System Selected Priorities**

Mount Sinai Health System will focus on the Prevention Agenda priorities listed below:

#### **Priority Area: Prevent Chronic Diseases**

- **Focus Area 3.** Increase Access to High Quality Chronic Disease Preventive Care and Management in Both Clinical and Community Settings
  - **Goal #3.1:** Increase screening rates for cardiovascular disease, diabetes and breast, cervical and colorectal cancers, especially among disparate populations

#### **Priority Area: Promote Mental Health and Prevent Substance Abuse**

- **Focus Area 1.** Promote Mental, Emotional and Behavioral Health (MEB) well-being in Communities
  - **Goal #2.3:** Prevent suicides among youth and adults
- **Focus Area 3.** Strengthen Infrastructure across Systems: MEB health promotion and disorders prevention is a relatively new field, requiring a paradigm shift in approach and perspective.
  - **Goal #3.2:** Facilitate and strengthen MEB health promotion and MEB disorder prevention

#### **Priority Area: Prevent HIV/STDs, Vaccine-Preventable Disease and Healthcare-Associate Infections**

- **Focus Area 1:** Prevent HIV and STDs:
  - **Goal #2:** Increase early access to and retention in HIV care in the State of New York
  - **Goal #4:** Decrease HIV and STD disparities in the State of New York



**Exhibit: ZIP Codes Served by The Mount Sinai Health System**

<b><u>MOUNT SINAI BETH ISRAEL</u></b>								
<b>ZIP Codes Served</b>								
<b>Bronx, NY</b>	<b>Kings, NY</b>		<b>New York, NY</b>		<b>Queens, NY</b>		<b>Richmond, NY</b>	<b>Westchester, NY</b>
<b>13</b>	<b>41</b>		<b>26</b>		<b>41</b>		<b>9</b>	<b>6</b>
10451	11201	11222	10001	10029	11101	11414	10301	10523
10452	11202	11223	10002	10031	11102	11415	10302	10543
10454	11203	11224	10003	10032	11104	11416	10303	10598
10456	11204	11225	10004	10033	11105	11417	10304	10605
10457	11205	11226	10009	10034	11354	11418	10305	10705
10459	11206	11228	10012	10035	11355	11419	10306	10801
10460	11207	11229	10013	10036	11357	11420	10309	
10463	11208	11230	10016	10038	11364	11421	10312	
10466	11209	11231	10021	10039	11365	11422	10314	
10467	11210	11232	10024	10040	11369	11427		
10468	11211	11233	10025	10044	11370	11429		
10469	11212	11234	10026	10128	11372	11432		
10475	11213	11235	10027	10268	11373	11433		
	11214	11236			11374	11434		
	11215	11237			11375	11436		
	11216	11238			11378	11691		
	11217	11239			11379	11692		
	11218	11247			11385	11693		
	11219	11249			11411	11694		
	11220	11252			11412	11697		
	11221				11413			



## MOUNT SINAI BROOKLYN

### ZIP Codes Served

New York, NY		Queens, NY		Bronx, NY	Kings, NY		Richmond, NY	Westchester, NY	
60		64		25	41		13	52	
10001	10032	11002	11378	10451	11201	11221	10301	10502	10573
10002	10033	11004	11379	10452	11202	11222	10302	10507	10577
10003	10034	11005	11385	10453	11203	11223	10303	10510	10580
10004	10035	11101	11386	10454	11204	11224	10304	10514	10583
10005	10036	11102	11411	10455	11205	11225	10305	10517	10589
10006	10037	11103	11412	10456	11206	11226	10306	10520	10590
10007	10038	11104	11413	10457	11207	11228	10307	10522	10591
10008	10039	11105	11414	10458	11208	11229	10308	10523	10594
10009	10040	11106	11415	10459	11209	11230	10309	10526	10595
10010	10044	11109	11416	10460	11210	11231	10310	10528	10598
10011	10065	11352	11417	10461	11211	11232	10311	10530	10602
10012	10069	11354	11418	10462	11212	11233	10312	10532	10605
10013	10075	11355	11419	10463	11213	11234	10314	10533	10606
10014	10099	11356	11420	10464	11214	11235		10538	10607
10016	10107	11357	11421	10465	11215	11236		10543	10701
10017	10108	11358	11422	10466	11216	11237		10545	10703
10018	10110	11360	11423	10467	11217	11238		10548	10704
10019	10112	11361	11426	10468	11218	11239		10549	10705
10020	10113	11362	11427	10469	11219	11241		10550	10707
10021	10116	11363	11428	10470	11220	11243		10552	10708
10022	10128	11364	11429	10471		11249		10553	10709
10023	10129	11365	11431	10472				10560	10710
10024	10150	11366	11432	10473				10562	10801
10025	10159	11367	11433	10474				10566	10803
10026	10162	11368	11434	10475				10567	10804
10027	10163	11369	11435					10570	10805
10028	10165	11370	11436						
10029	10276	11372	11691						
10030	10280	11373	11692						
10031	10282	11374	11693						
		11375	11694						
		11377	11697						



**THE MOUNT SINAI HOSPITAL**  
**ZIP Codes Served**

New York, NY		Queens, NY		Bronx, NY	Kings, NY		Richmond, NY	Westchester, NY	
60		64		25	42		12	69	
10001	10032	11004	11380	10451	11201	11222	10301	10502	10576
10002	10033	11005	11385	10452	11202	11223	10302	10503	10577
10003	10034	11101	11386	10453	11203	11224	10303	10504	10580
10004	10035	11102	11411	10454	11204	11225	10304	10505	10583
10005	10036	11103	11412	10455	11205	11226	10305	10506	10587
10006	10037	11104	11413	10456	11206	11228	10306	10507	10588
10007	10038	11105	11414	10457	11207	11229	10307	10510	10589
10008	10039	11106	11415	10458	11208	11230	10308	10514	10590
10009	10040	11109	11416	10459	11209	11231	10309	10518	10591
10010	10044	11354	11417	10460	11210	11232	10310	10519	10594
10011	10045	11355	11418	10461	11211	11233	10312	10520	10595
10012	10065	11356	11419	10462	11212	11234	10314	10522	10597
10013	10069	11357	11420	10463	11213	11235		10523	10598
10014	10075	11358	11421	10464	11214	11236		10527	10601
10016	10101	11360	11422	10465	11215	11237		10528	10602
10017	10107	11361	11423	10466	11216	11238		10530	10603
10018	10108	11362	11426	10467	11217	11239		10532	10604
10019	10111	11363	11427	10468	11218	11241		10533	10605
10020	10113	11364	11428	10469	11219	11243		10535	10606
10021	10116	11365	11429	10470	11220	11249		10536	10607
10022	10125	11366	11431	10471	11221	11252		10538	10701
10023	10128	11367	11432	10472				10543	10702
10024	10150	11368	11433	10473				10546	10703
10025	10159	11369	11434	10474				10547	10704
10026	10162	11370	11435	10475				10548	10705
10027	10163	11372	11436					10549	10706
10028	10185	11373	11690					10550	10707
10029	10274	11374	11691					10552	10708
10030	10280	11375	11692					10553	10709
10031	10282	11377	11693					10560	10710
		11378	11694					10562	10801
		11379	11697					10566	10803
								10567	10804
								10570	10805
								10573	



## MOUNT SINAI QUEENS

### ZIP Codes Served

New York, NY	Queens, NY		Bronx, NY	Kings, NY	Richmond, NY	Westchester, NY
34	59		24	35	9	8
10001	11004	11378	10451	11201	10301	10522
10002	11101	11379	10452	11203	10302	10550
10003	11102	11380	10453	11204	10303	10552
10006	11103	11385	10454	11205	10304	10594
10007	11104	11411	10455	11206	10305	10603
10009	11105	11412	10456	11207	10306	10605
10010	11106	11413	10457	11208	10309	10701
10011	11109	11414	10458	11209	10310	10705
10012	11354	11415	10459	11211	10314	
10013	11355	11416	10460	11212		
10016	11356	11417	10461	11213		
10017	11357	11418	10462	11214		
10018	11358	11419	10463	11215		
10019	11360	11420	10465	11216		
10021	11361	11421	10466	11217		
10022	11362	11422	10467	11218		
10024	11363	11423	10468	11219		
10025	11364	11426	10469	11220		
10026	11365	11427	10470	11221		
10027	11366	11428	10471	11222		
10028	11367	11429	10472	11223		
10029	11368	11432	10473	11224		
10030	11369	11433	10474	11225		
10031	11370	11434	10475	11226		
10032	11372	11435		11228		
10035	11373	11436		11229		
10036	11374	11691		11230		
10037	11375	11692		11231		
10038	11377	11693		11232		
10044		11694		11233		
10045				11234		
10075				11236		
10128				11237		
10150				11238		
				11249		





**MOUNT SINAI ST. LUKE'S**  
**ZIP Codes Served**

<b>Bronx, NY</b>	<b>Kings, NY</b>		<b>New York, NY</b>		<b>Queens, NY</b>		<b>Richmond, NY</b>	<b>Westchester, NY</b>
<b>25</b>	<b>39</b>		<b>50</b>		<b>56</b>		<b>11</b>	<b>28</b>
10451	11201	11221	10001	10029	11004	11374	10301	10502
10452	11202	11222	10002	10030	11101	11375	10302	10506
10453	11203	11223	10003	10031	11102	11377	10303	10520
10454	11204	11224	10004	10032	11103	11378	10304	10522
10455	11205	11225	10005	10033	11104	11379	10305	10530
10456	11206	11226	10007	10034	11105	11385	10306	10543
10457	11207	11228	10009	10035	11106	11411	10308	10550
10458	11208	11229	10010	10036	11354	11412	10309	10552
10459	11209	11230	10011	10037	11355	11413	10310	10560
10460	11210	11231	10012	10038	11356	11414	10312	10562
10461	11211	11232	10013	10039	11357	11415	10314	10567
10462	11212	11233	10014	10040	11358	11416		10577
10463	11213	11234	10016	10044	11360	11417		10583
10464	11214	11235	10017	10045	11361	11418		10591
10465	11215	11236	10018	10055	11362	11419		10595
10466	11216	11237	10019	10065	11363	11420		10605
10467	11217	11238	10020	10069	11364	11421		10606
10468	11218	11239	10021	10075	11365	11422		10701
10469	11219	11249	10022	10101	11366	11423		10703
10470	11220		10023	10116	11367	11427		10704
10471			10024	10128	11368	11428		10705
10472			10025	10159	11369	11429		10706
10473			10026	10163	11370	11432		10707
10474			10027	10276	11372	11433		10708
10475			10028	10280	11373	11434		10710
						11435		10801
						11436		10803
						11691		10805
						11692		
						11693		
						11694		



## MOUNT SINAI WEST

### ZIP Codes Served

New York, NY		Queens, NY		Bronx, NY	Kings, NY		Richmond, NY	Westchester, NY	
59		59		25	42		12	47	
10001	10031	11004	11379	10451	11201	11222	10301	10502	10567
10002	10032	11101	11385	10452	11202	11223	10302	10504	10570
10003	10033	11102	11411	10453	11203	11224	10303	10506	10573
10004	10034	11103	11412	10454	11204	11225	10304	10510	10580
10005	10035	11104	11413	10455	11205	11226	10305	10514	10583
10006	10036	11105	11414	10456	11206	11228	10306	10520	10589
10007	10037	11106	11415	10457	11207	11229	10307	10522	10591
10008	10038	11109	11416	10458	11208	11230	10308	10523	10595
10009	10039	11354	11417	10459	11209	11231	10309	10528	10601
10010	10040	11355	11418	10460	11210	11232	10310	10530	10603
10011	10044	11356	11419	10461	11211	11233	10312	10533	10605
10012	10065	11357	11420	10462	11212	11234	10314	10536	10606
10013	10069	11358	11421	10463	11213	11235		10538	10607
10014	10075	11360	11422	10464	11214	11236		10543	10701
10016	10101	11361	11423	10465	11215	11237		10547	10703
10017	10107	11362	11427	10466	11216	11238		10549	10704
10018	10108	11363	11428	10467	11217	11239		10550	10705
10019	10113	11364	11429	10468	11218	11240		10552	10706
10020	10116	11365	11430	10469	11219	11243		10553	10707
10021	10123	11366	11432	10470	11220	11249		10560	10708
10022	10128	11367	11433	10471	11221	11255		10562	10709
10023	10150	11368	11434	10472				10566	10710
10024	10159	11369	11435	10473					10801
10025	10162	11370	11436	10474					10803
10026	10163	11372	11691	10475					10804
10027	10169	11373	11692						
10028	10185	11374	11693						
10029	10276	11375	11694						
10030	10280	11377	11697						
	10282	11378							

**NEW YORK EYE AND EAR INFIRMARY OF MOUNT SINAI**  
**ZIP Codes Served**

<b>Bronx, NY</b>	<b>Kings, NY</b>	<b>New York, NY</b>	<b>Queens, NY</b>	<b>Richmond, NY</b>	<b>Westchester, NY</b>
<b>15</b>	<b>19</b>	<b>20</b>	<b>22</b>	<b>6</b>	<b>4</b>
10451	11204	10001	11103	10301	10543
10452	11206	10002	11104	10303	10583
10453	11207	10003	11105	10304	10580
10454	11211	10009	11120	10305	10701
10455	11214	10011	11355	10310	
10456	11215	10014	11358	10314	
10457	11218	10016	11365		
10458	11219	10024	11367		
10461	11220	10026	11368		
10463	11222	10027	11369		
10465	11223	10030	11370		
10467	11226	10031	11372		
10468	11230	10032	11373		
10472	11232	10033	11374		
10475	11233	10034	11377		
	11234	10036	11378		
	11235	10038	11385		
	11237	10040	11413		
	11239	10044	11418		
		10065	11421		
			11432		
			11693		



### The Mount Sinai Health System Visit Summary 2016

	Mount Sinai Brooklyn		Mount Sinai Beth Israel		Mount Sinai Hospital		Mount Sinai Queens		Mount Sinai West		Mount Sinai St. Luke's	
	Visits	% Total	Visits	% Total	Visits	% Total	Visits	% Total	Visits	% Total	Visits	% Total
Bronx	21	0.2%	2,035	7.0%	5,647	12.3%	106	1.2%	2,259	10.9%	1,722	12.4%
Brooklyn	9,272	95.0%	9,932	34.1%	8,453	18.4%	181	2.1%	3,187	15.4%	457	3.3%
New York	71	0.7%	13,599	46.7%	21,612	47.0%	382	4.4%	12,705	61.2%	11,120	79.8%
Queens	355	3.6%	2,717	9.3%	7,615	16.6%	8,046	92.1%	2,053	9.9%	467	3.4%
Staten Island	34	0.3%	598	2.1%	999	2.2%	16	0.2%	187	0.9%	49	0.4%
Westchester	8	0.1%	255	0.9%	1,653	3.6%	8	0.1%	371	1.8%	121	0.9%
<b>Grand Total</b>	<b>9,761</b>	<b>100.0%</b>	<b>29,136</b>	<b>100.0%</b>	<b>45,979</b>	<b>100.0%</b>	<b>8,739</b>	<b>100.0%</b>	<b>20,762</b>	<b>100.0%</b>	<b>13,936</b>	<b>100.0%</b>